



What is needed to create a sustainable tokenized ecosystem?

Blockchain from a Central Bank Perspective
3 November 2017, Zurich

Dr. Andreas Glarner

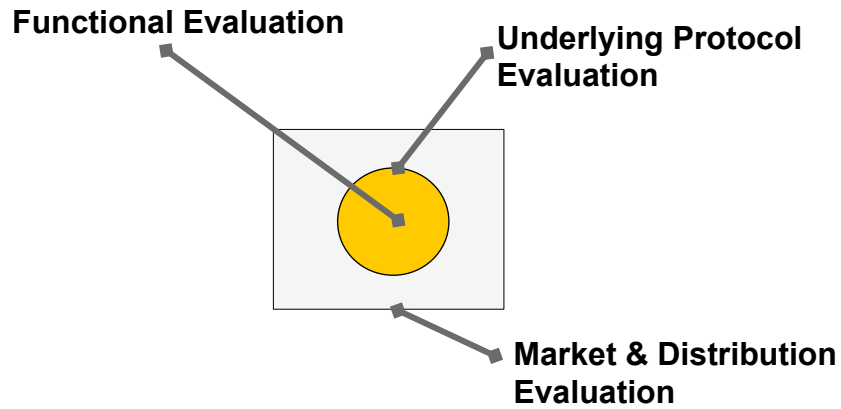
1 for all. Legal | Tax | Compliance

BCP Definition

Blockchain Crypto Property (“BCP”): (1) Digital information containing all elements of a **property right**, (2) that are registered on a blockchain or in an alternative distributed ledger, (3) which can be transferred via a protocol, (4) and that may (or may not) carry out additional functions governed by a Smart Contract System (SCS), following coded and/or manual input.

www.mme.ch

BCP Classification & Assessment



MME | 3

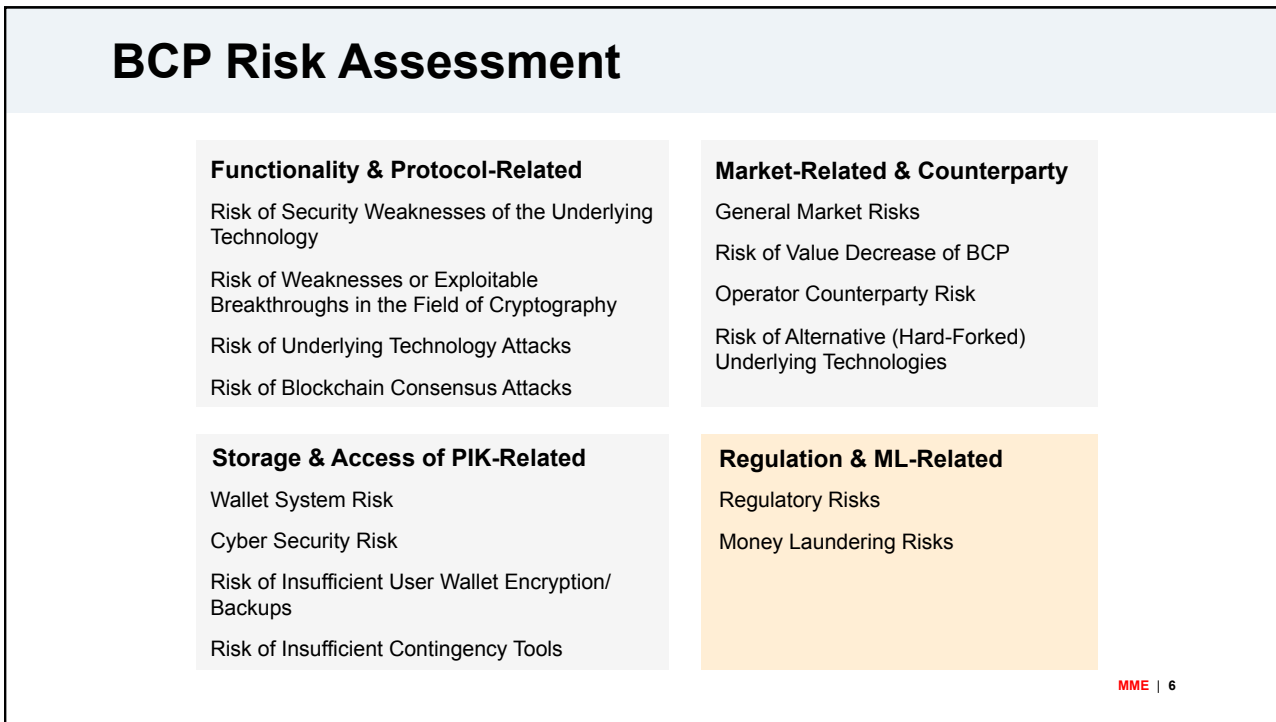
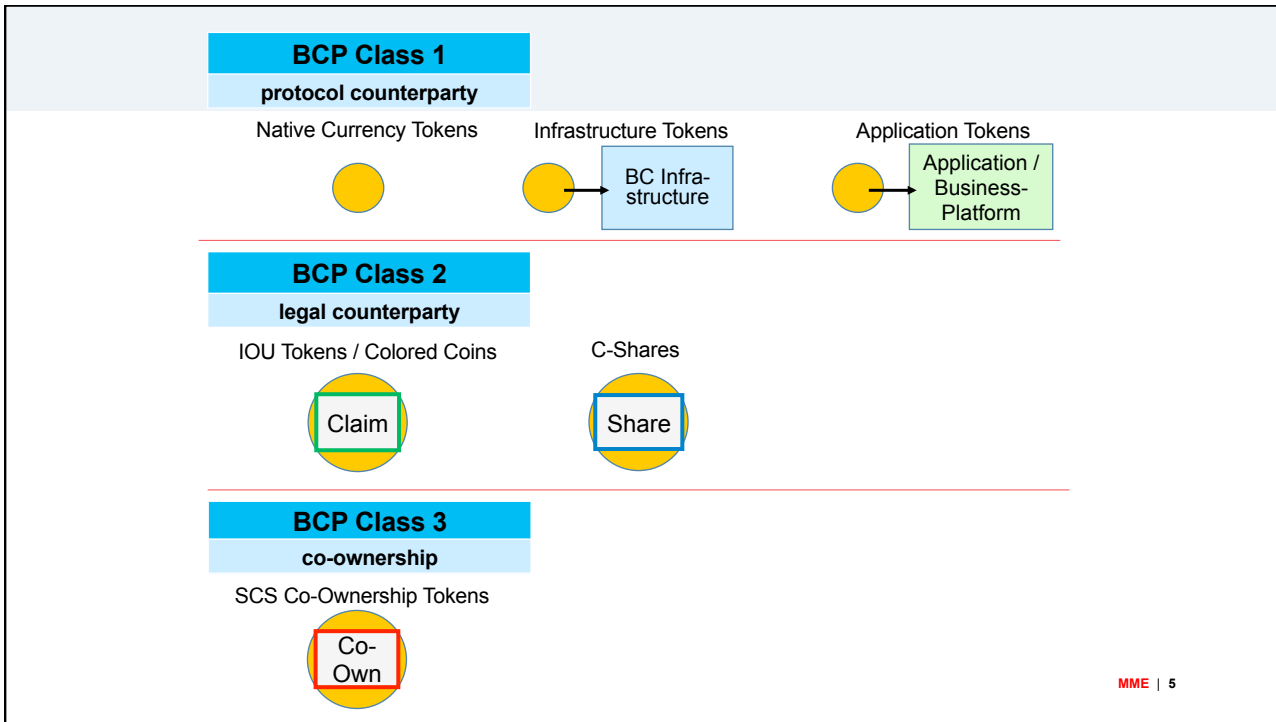
Functional BCP Classification

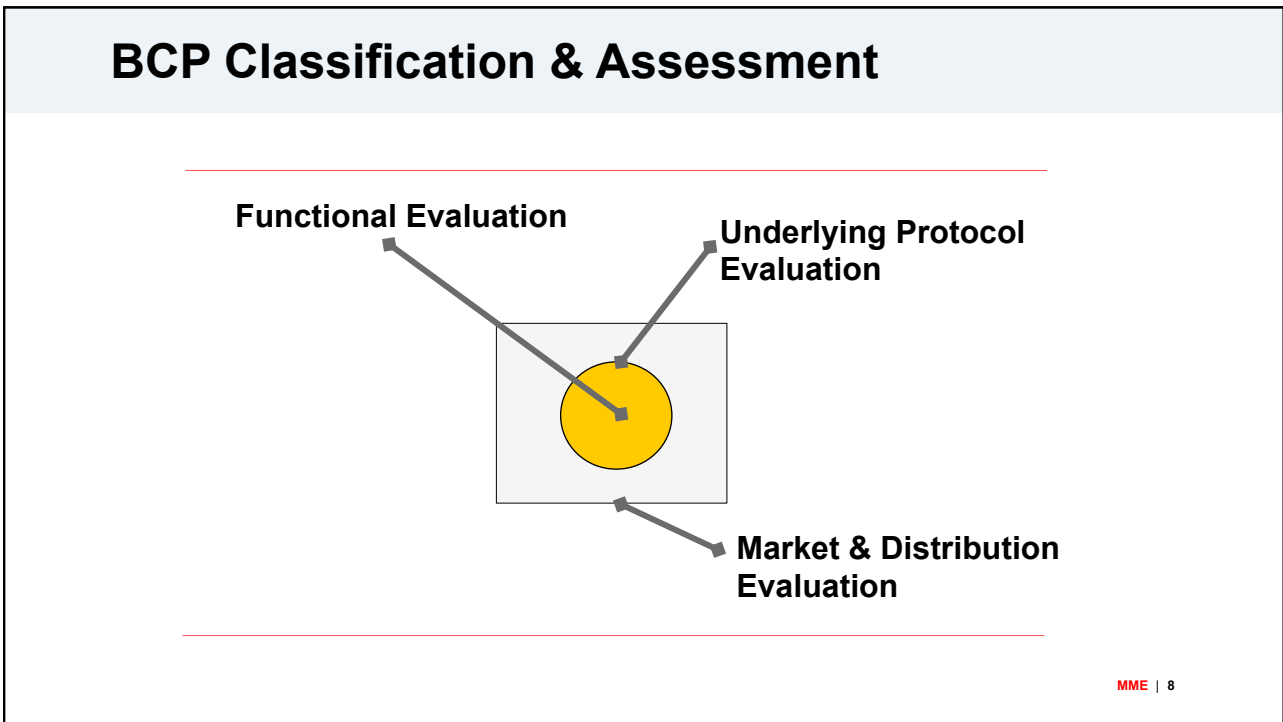
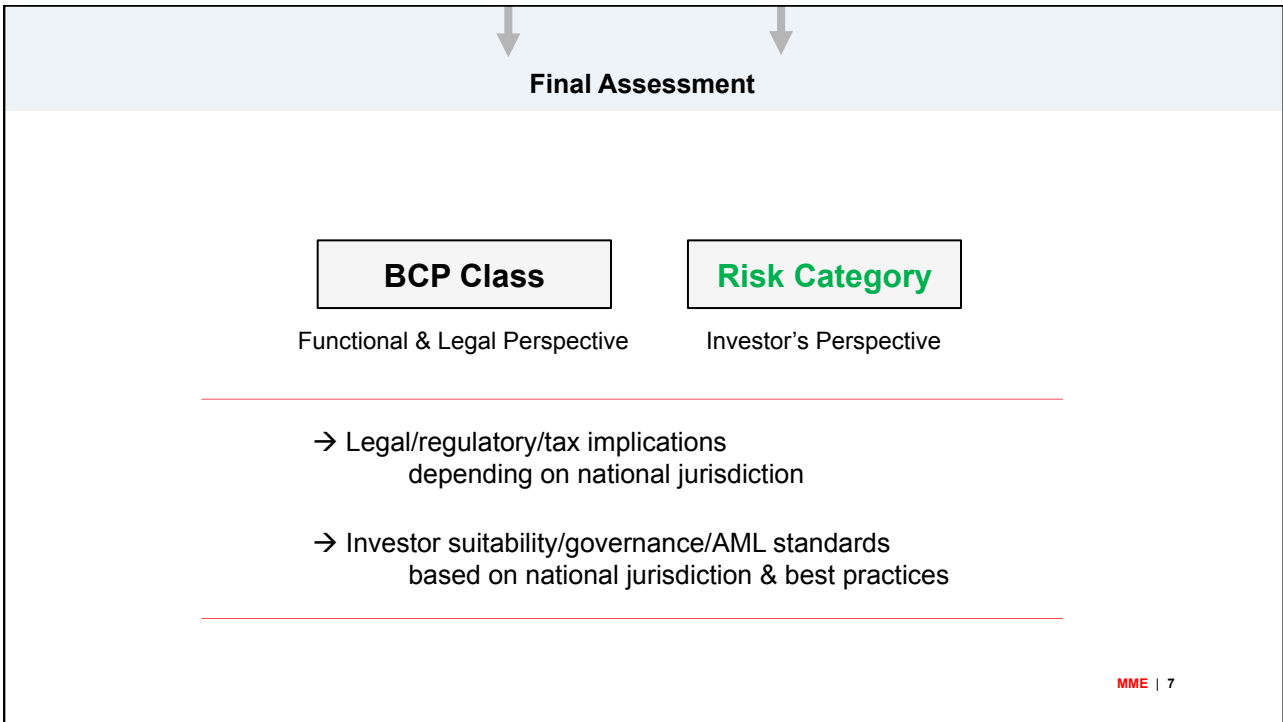


BCP Risk Assessment



MME | 4





TGE 2.0

Responsible Token Generating Event

ICO

1. Fully Public / No KYC/AML Controls

Anyone can send Ether to the smart contract or other BCPs to receiver wallets, generally anonymously.

2. Poor Disclosure and Vetting

No controls about how to publish a new sale. Often unstructured pre- tech and pre revenue.

3. No Distribution Control

No vetting of founders, contributors or distributors; no controls or monitoring of distribution and source of funds.

4. No Audit and post TGE controls

TGE

1. Managed Contributor Onboarding

Contributors, distributors, founders go through KYC, background, AML, business case, technology checks. Only approved tokens and users can participate.

2. Managed Token Offering Publishing

Token contribution offering can be restricted to certain types of investors, or certain geographies to comply with local investment controls.

3. Managed Token Distribution

Only vetted and approved distributors can promote and sell the token. Commissions paid automatically after audit approval. Full disclosure.

4. Audit and Post TGE Controls

Full pre and post private and public contribution audit reporting.

MME | 9

MME |||

Office Zurich
Zollstrasse 62
P.O. Box 1758
CH-8031 Zurich
T +41 44 254 99 66
F +41 44 254 99 60

Office Zug
Gubelstrasse 11
P.O. Box 613
CH-6301 Zug
T +41 41 726 99 66
F +41 41 726 99 60

www.mme.ch
office@mme.ch